

WESTSIDE CORNERS

W 192 & WESTSIDE BLVD, KISSIMMEE, FL 34747



PROPERTY HIGHLIGHTS

- Multiple parcels with frontage on W 192/W Irlo Bronson Memorial Hwy available
- Lighted Intersection of W 192 & Westside Blvd South bound/Avalon Blvd North bound
- Exposure to $\pm 50,000$ cars per day commuting to Disney and neighboring resorts
- High growth Four Corners area with connection roads to Champions Gate & Horizon West
- Parcel may be aggregated or divided
- 1.4 miles east of US 27 and 1.8 miles west of SR 429

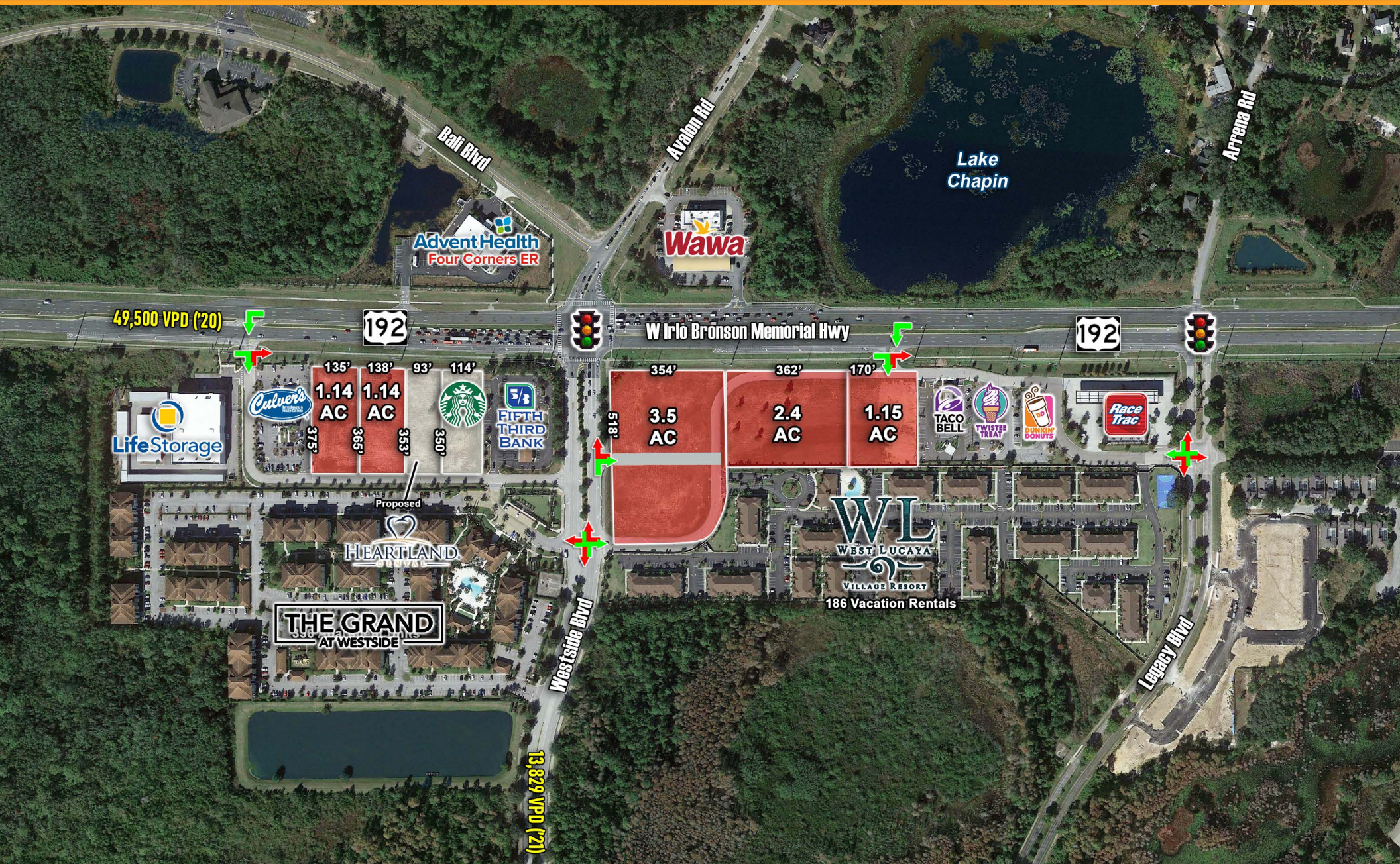
2021 DEMOGRAPHICS

	1 MILE	3 MILE	5 MILE
Population	4,252	25,980	52,944
Average HH Income	\$71,215	\$70,530	\$74,242
Median Age	38.8	39.4	37.4

AREA RETAILERS



ZOOM AERIAL



MARKET AERIAL

MARKET AERIAL

STACY MENENDEZ
321.303.0884
stacy@launchpad-advisors.com

LAUNCH PAD
Advisors, LLC

321.303.0884

LAUNCH PAD
Advisors, LLC